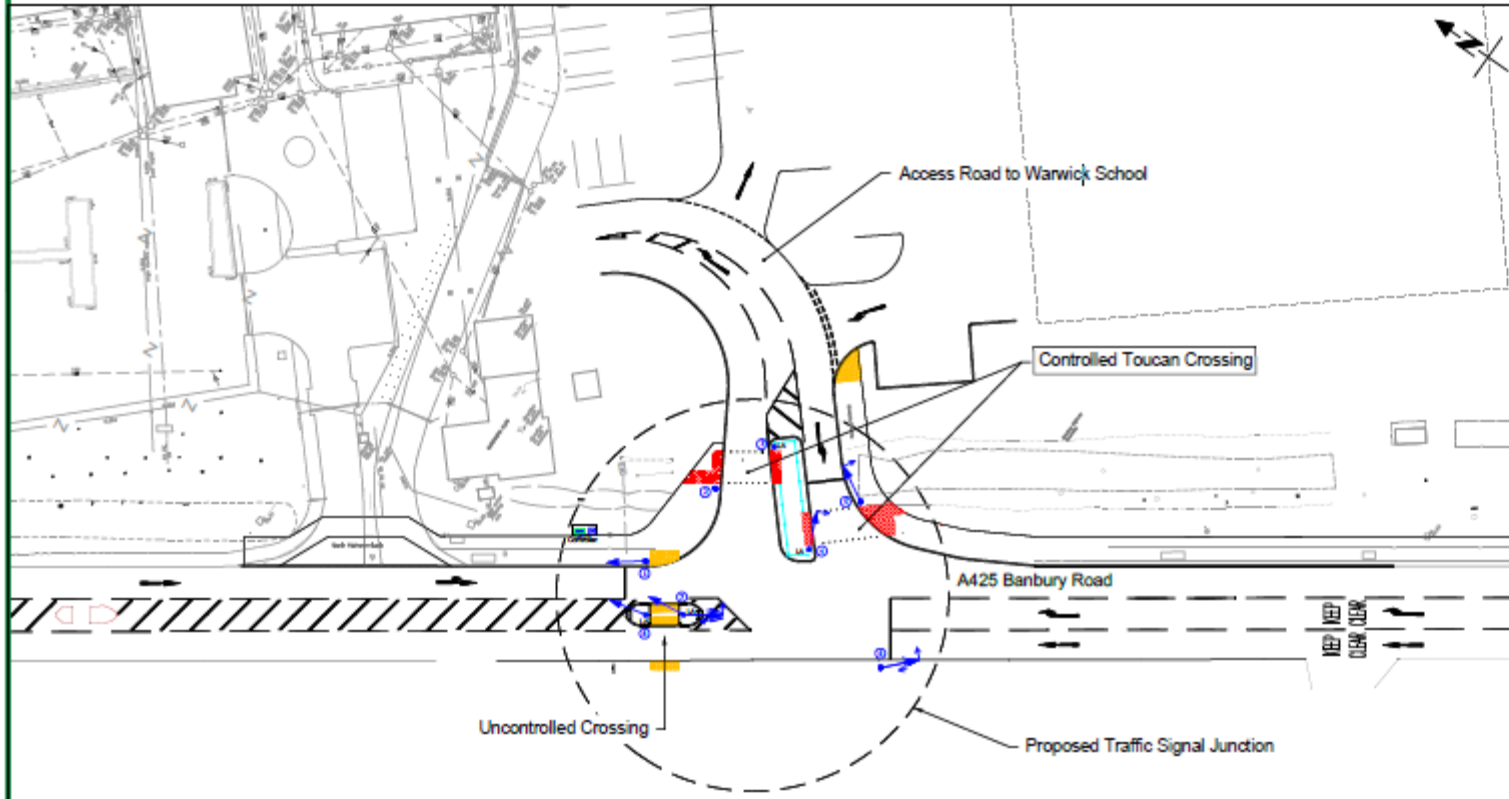







Proposed Traffic Signal Junction Area In Detail



Key

-  Traffic signal head mounted on pole
-  Traffic Signal Controller Approximate dimensions:
73cm width x 43cm depth x 116cm height
-  Traffic Signal Controller Feeder Pillar (FP)
Approximate dimensions:
36cm width x 25cm depth x 60cm height
-  Red Tactile Paving
-  Buff Tactile Paving

NOTES

All traffic signal equipment and road markings shown are indicative and may be subject to change during installation due to site constraints.

REV	DRN	AMENDMENT	DATE



Design Services
Environment Services, Communities
Shire Hall Post Room
Warwick
CV34 4SP
Tel: 01928 410410
Web: www.warwickshire.gov.uk



C:\Design\04_2020\10 Drawings\201 AutoCAD\242\2421-003.dwg

PROJECT

A425 - Banbury Road/Access Rd, Warwick
Proposed Traffic Signal Junction

TITLE

Public Notice Plan
Location of Traffic Signal Junction
Purpose of Drawing: Consultation

Drn	EM	Cr'd	GD	App'd	GD
Date	03-12-18	Date	21-01-19	Date	21-01-19

Status **Approved (Level 3)**

Scale **1:500** Sheet size **A3**

DRG. NO. **24.2—261-003** Rev. **-**